

Resale Homes at
“Pine Meadows” (your place to be)
8473 Wellington Road 19, Belwood Ontario N0B 1J0
226 821 1688 or 1.800. 561. 0612



92 White Bark Way
Carmel “B” with approximately 1209 sq ft

This attractive 2 bedroom, 2 bathroom popular “Carmel” model offers numerous features to enhance your new lifestyle. It has great curb appeal and is ideally located on a quiet cul de sac. The oversized, freshly painted front porch offers privacy and a great setting for enjoying your morning coffee watching the sunrise. There is a walk out from the dining room to a private patio with green space and mature trees making this the perfect place to entertain or sit back and read a book. The main living areas, including the kitchen, dining room and living room have been freshly painted. The large kitchen offers plenty of counter & cupboard space including a pantry and kitchen nook. Upgrades include hardwood floor in the dining and living area and hallway. The kitchen and bathrooms have vinyl flooring, and the bedrooms are carpeted. The primary bedroom has a large closet and ensuite with tub/shower combination. The main bathroom has a shower. There is access to the garage from inside the house. The basement is partially finished with two comfortable rooms plus an abundant of storage. This home is move in ready and waiting for you to begin your new active lifestyle.

[Photos](#) (Right click Photos and select Open Hyperlink)

Current Monthly Payments:

Land Lease	\$666.25	Yearly Taxes: \$2277.07 (2023)
Maintenance	\$575.00	Heating, hydro and A/C – average \$150/month
TOTAL	\$1241.25	NEW List Price \$555,000

Pine Meadows Retirement Community Limited acting as agent for vendor

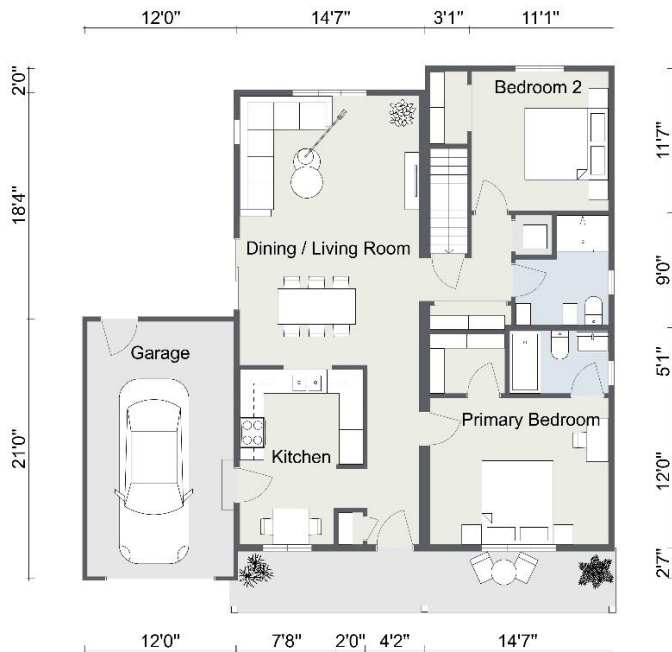
Features of the Home:

Located on a quiet cul de sac
Great curb appeal
Oversized front porch -freshly painted
Hardwood in Dining room, Living Room & Hallway
Dining, living room, kitchen freshly painted
Large kitchen including pantry& breakfast nook
Private Patio with green space and mature trees
Access from garage into the home
Partially finished basement

Included:

all window coverings, lighting fixtures,
appliances (fridge, stove, dishwasher, washer, dryer)

Floor Plan:



Room Sizes:

Kitchen – 14'5"x10'
Living/Dining Room – 22'2"x14'7"
Primary Bedroom – 12'x14'7"
Bedroom 2 – 11'7"x11'1"
Garage – 21'x12'
Patio – 12'x14'

