

Resale home at

## Pine Meadows

8473 Wellington 19, R.R. #1, Belwood Ontario N1B 1J0

226.821.1688 or 1.800.561.0612



**29 White Bark Way Belwood ON N0B 1J0**

**Metz "A" with approximately 1414 sq ft**

This two bedroom, two bathroom, brick and vinyl home features a **two car garage** and backs onto a large green area for added tranquility. The location of this home allows for lots of sunshine in the kitchen, dining, and living room area. The master bedroom has a walk in closet with a tub shower unit in the ensuite. The extra large second bedroom has a patio door which opens onto the private interlocking patio. The bright kitchen has space for a small table and is open to the dining room. The main floor laundry also has a laundry tub. The oak rail leading to the finished basement creates an open concept feeling in the entrance foyer. This home has been well maintained by the original owner. **New price. Immediate occupancy. Motivated seller.**

### Current monthly payments:

Land Lease:	\$498.00	2018 Yearly Taxes: \$2026.04
Maintenance:	\$465.00	
TOTAL	\$963.00	Heating, hydro and A/C – average \$200.00/month

Next scheduled increase shown as of January 1, 2019.

**List Price .....\$405,000.00**

Pine Meadows Retirement Community Limited acting as agent for vendor.

## Features of the Home

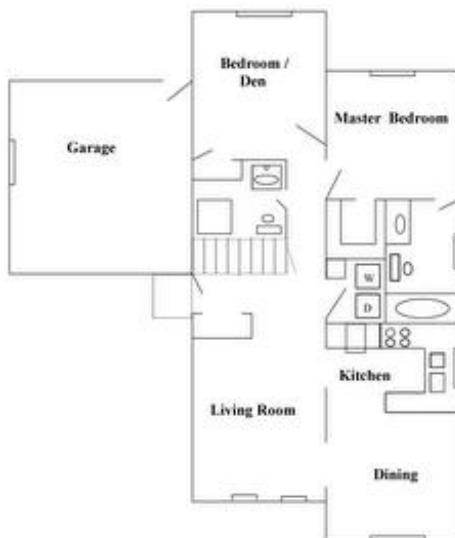
Two car garage with code entry  
Brick and vinyl exterior  
Bright living area  
Master bedroom with ensuite and walk in closet  
Large second bedroom with closet and patio door  
Main floor laundry with tub  
Full glass entry outer door  
Interlocking stone patio with private back yard area  
Oak railing leading to finished basement  
New roof in 2016

## Items Included

All lights fixtures  
All window coverings  
All appliances on the main floor (stove, fridge, dish washer, microwave, washer, dryer)  
Water softener and hot water tank  
Kitchen sink garburator  
Bookcase in basement

## Not Included

Freezer in the garage (negotiable)



## Room Sizes

Living Area: 13'4"x13'1"  
Dining Room: 10'3"x13'1"  
Kitchen: 11'1"x13'1"  
Master Bedroom: 13'8"x13'1"  
Bedroom 2: 18'2"x13'1"  
Garage: Double  
21'4"x21'4"