

Resale home at

Pine Meadows

8473 Wellington 19, R.R. #1, Belwood Ontario N1B 1J0

226.821.1688 or 1.800.561.0612



26 White Bark Way

Belwood "A" with approx 1135 sq. ft.

This attractive home is ideally located on White Bark Way backing onto a large green space. The home offers a one car garage with electric opener, access to the garage from inside the home, two bedrooms, a main floor bathroom with both a tub/shower as well as a separate shower. The bathroom has been attractively upgraded with a new vanity, taps and cupboards. Laundry facilities are ideally located on the main floor. This floor plan offers a living room, dining room, as well as a four season family room backing onto a large patio. The oak railing accents the finished stairway to a partially finished basement. The home has carpet and vinyl floor coverings, is very clean and has been exceptionally well maintained by its former owner. This home is now vacant and ready for immediate occupancy by its new owner. This floor plan offers many advantages and must be seen to be appreciated.

Current monthly payments:

Land Lease:	\$464.00	2017 Yearly Taxes: \$2063.20
Maintenance:	\$465.00	
TOTAL	\$929.00	Heating, hydro and A/C – average \$180.00/month

Next scheduled increase shown as of January 1, 2019.

List Price\$339,900

Pine Meadows Retirement Community Limited acting as agent for vendor.

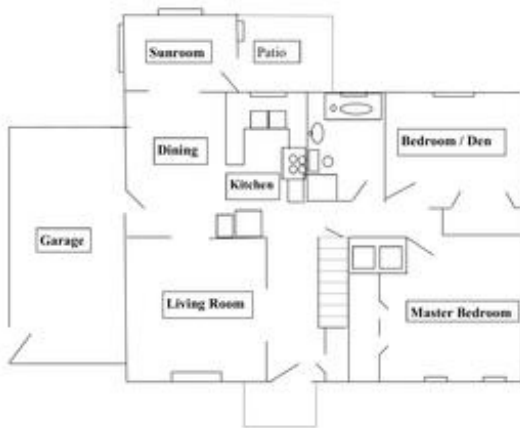
Features of the Home

- Two bedrooms with large closets
- Ample storage space in the kitchen
- California shutters
- Main floor laundry
- Master bathroom with tub/shower and separate shower
- Oak railing with finished stairway to partially finished basement
- Garage access from inside the home
- One car garage with opener, Interlocking stone driveway
- Large patio backing onto large green space
- Exceptionally clean and well maintained home
- Available for immediate occupancy

Included in Sale of the Home

- All appliances (refrigerator, stove, dishwasher, microwave, washer, dryer, chest freezer)
- Shelving, tool pegboard and workbench in basement
- Shelving in garage

(Many items including furniture and patio furniture not included are negotiable)



Room Sizes

Living Area:	13'0" X 12'1"
Dining Room:	10'4" X 12'1"
Kitchen:	9'0" X 12'1"
Master Bedroom:	14'5" X 12'1"
Bedroom 2:	11'5" X 11'8"
Garage:	10'8" X 21'4"