



Resale home at Pine Meadows

8473 Wellington Road 19, Belwood Ontario N0B 1J0

226-821-1688 or 1-800-561-0612

59 Pine Ridge Road [Elora "A" Model] with approx. 1547 sqft

List Price: \$524,999



Welcome to this efficient, low maintenance two-bedroom bungalow designed for comfort, convenience, and easy living. The private backyard offers a peaceful retreat, surrounded by a beautiful mix of mature trees. Step inside to a warm and cozy living room with a large front south facing window. The primary bedroom features a 4-piece ensuite, while a second bedroom is conveniently located near a 3-piece bathroom – ideal for overnight guests. The heart of the home is the open-concept kitchen, dining, and family room. Five large Family Room windows create a warm, cheerful space where you can enjoy everyday living, entertain family and friends, or simply take in the backyard views.

Main-floor living is completed with side-by-side laundry, a practical mudroom area, and direct access to the attached 1½-car garage—making daily routines easy in every season.

The basement offers excellent flexibility, with a finished office and a third bathroom already in place. The remaining space is framed and ready for your personal touch. Access is enhanced with an installed chair lift, providing added ease and accessibility.

This thoughtfully designed home offers the comfort, functionality, and peace of mind that make it an excellent choice for those seeking to simplify without compromising on space or lifestyle.

To view [House Photos](#) of this listing right click and open hyperlink. To see photos of the [Pine Meadows Community](#), right click and open hyperlink. **Seller is motivated, bring your offer.**

Current Monthly Payments:

Land Lease \$699.98

Maintenance \$612.60

TOTAL \$1312.58

Yearly Taxes: \$2769.10 (2025)

Heating, hydro and A/C – Average \$175/month

Features of the Home:

- Beautiful treed lot
- Interlock brick driveway and 10' x 16' back patio
- Sun filled front Living Room
- Bright and open concept kitchen, dining and family room
- Large primary bedroom with ensuite
- Second bedroom with conveniently located bathroom
- Main floor laundry room
- Mud room leading to the 1 ½ car garage
- Ground source heat pump for efficient heat and A/C
- Water softener
- Basement Office with long L-shaped workspace and shelving
- 2 Piece bathroom in basement
- Cellar with shelving

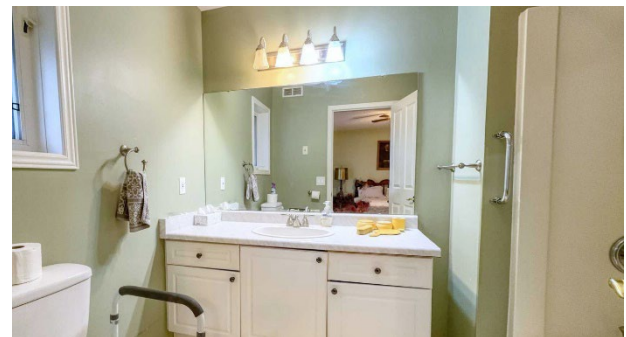
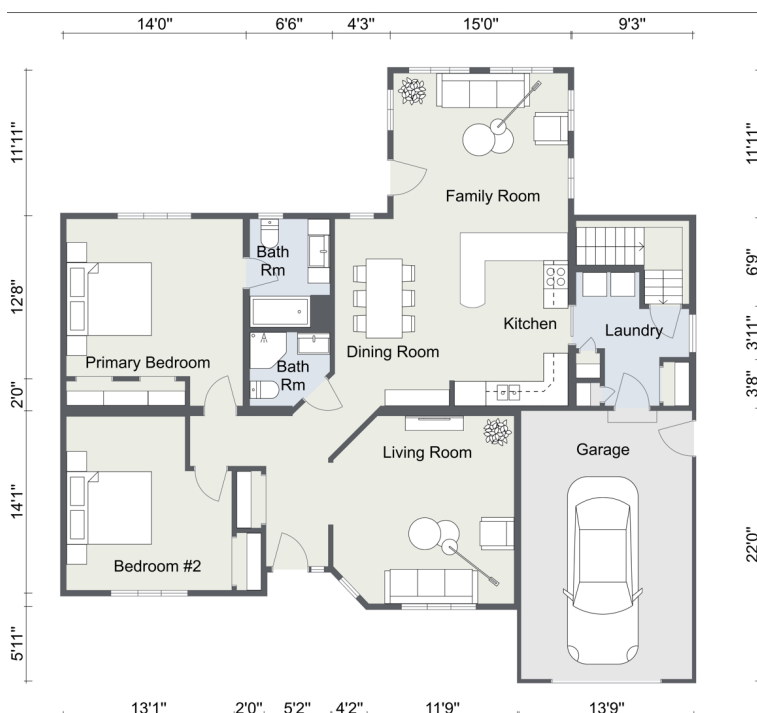


Included in the Sale of the Home:

- All window coverings
- All light fixtures
- Stove, fridge, dishwasher
- Washer & dryer
- Water softener (Owned)



Floor Plan:



Room Sizes:

- Kitchen & Dining Room – 18'9" x 15'1"
- Family Room – 14' x 11'
- Living Room – 14'9" x 15'1"
- Primary Bedroom – 14' x 15'1"
- Bedroom 2 – 13'1" x 11'8"
- Garage – 13'9" x 21'8"